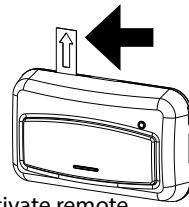




Example Remote



Pull protective tab to activate remote

**WARNING**



**Moving Door can cause serious injury or death.**

- Wall Console must be mounted in sight of door, at least 5 feet above floor and clear of moving parts.
- **Keep people clear** of opening while door is moving.
- **DO NOT** allow children to play with the remote or door opener.

If SAFETY REVERSE does not work properly:

- **Close door then disconnect opener** using the manual release handle.
- Refer to Door and Door Openers Owners Manuals before attempting any repairs.

**AVERTISSEMENT**



**UNE PORTE EN MOUVEMENT PEUT CAUSER DE GRAVES BLESSURES, VOIRE LA MORT.**

• N'installez PAS le transmetteur à moins que l'appareil de sécurité du dispositif de fermeture de porte ne fonctionne conformément au manuel du dispositif de fermeture de porte. La console murale doit être montée à la vue de la porte, à au moins 5 pieds au-dessus du sol et il ne doit y avoir aucune pièce de porte en mouvement à proximité.

- Éloignez les gens de l'ouverture lorsque la porte est en mouvement.
- NE permettez PAS aux enfants de jouer avec le transmetteur ou le dispositif de fermeture de porte.

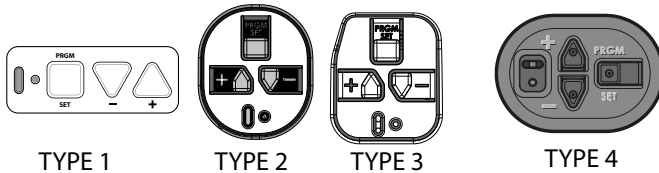
Si l'inversion de sécurité ne fonctionne pas correctement :

- Fermez la porte, puis déconnectez le dispositif d'ouverture à l'aide de la poignée de dégagement manuel.
- Référez-vous aux manuels du propriétaire de la porte et de l'ouvre-porte avant de tenter toute réparation.

**RESIDENTIAL OPENER PROGRAMMING  
OPERATOR PRODUCTION 2011 - CURRENT**

**NOTE:** The openers LEARN MODE will time out in 30 seconds. Programming must be completed within 30 seconds.

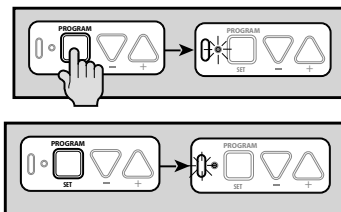
**Current Production Openers**



There are 4 types of programming button pads. Type 1 is shown in these steps. All buttons perform the same function and programming is the same for all types shown above.

**Place operator into programming mode: TYPE 1-2-3-4**

1. Press and hold the program button until the round LED turns blue, then release.
2. The round LED will go out and the long LED will begin flashing purple.
3. Press desired remote button once every two seconds until door operates.



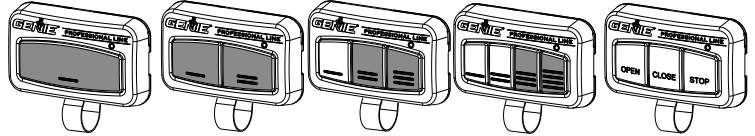
For Patent Information: [www.geniecompany.com/patents](http://www.geniecompany.com/patents),  
©2020, The Genie Company

**RESIDENTIAL OPENER PROGRAMMING  
OPERATOR PRODUCTION 2011 AND BEFORE**

**Openers manufactured between 1995 to 2011 and all external receivers. (LEARN CODE TYPE)**

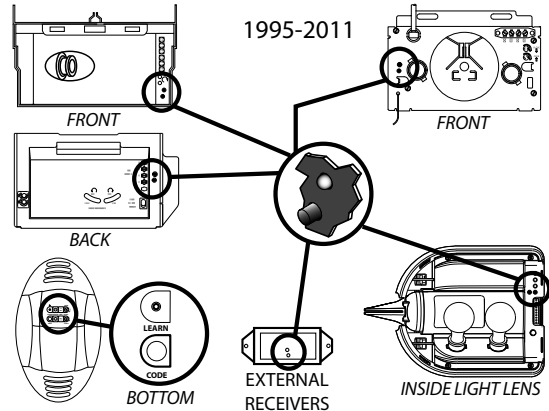
**NOTE:** Learn Code Buttons are normally located under lens covers on earlier models.

**NOTE:** Opener made November 1995-1997? Shaded buttons compatible.



**Place opener into programming mode:**

1. Press LEARN CODE button until RED LED begins to blink then release.
2. Press desired remote button once every two seconds until door operates.



**COMMERCIAL OPENER PROGRAMMING**

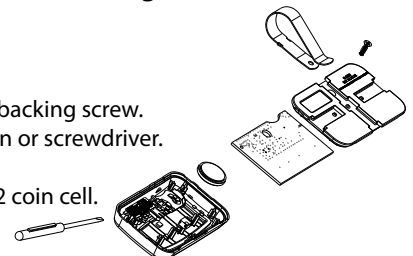
1. If operator is in RUN mode, press CAL/RUN key to enter calibration mode.
2. Press SCROLL (up or down) until display reads "LEARN NEW XMTR?" Fig.1
  - This question along with the instruction "HIT SET FOR YES" will continuously pan across the display window.
  - Pressing SCROLL or CAL/RUN will cancel the operation.
3. Press SET/CLEAR.
  - Display will read "PUSH XMTR BUTTON TWO TIMES TO LEARN XMTR."
4. Choose any transmitter button and press it two times.
  - A random number will be assigned to the transmitter and the display will read "XMTR \_\_ LEARNED." That transmitter is entered and ready to operate the door.
  - Label the transmitter with the assigned number.
5. Press SCROLL (up or down) to move on to another menu item, or CAL/RUN to exit the CALIBRATION mode.



Fig. 1

**CHANGING THE BATTERY:**

1. Remove visor clip.
2. Remove small phillips head backing screw.
3. Pry case open with small coin or screwdriver.
4. Remove circuit board.
5. Replace battery with CR2032 coin cell.



**PROGRAMMING ASSISTANCE:**

If the opener does not activate after the steps shown, repeat steps or contact Customer Care by website chat ([www.geniecompany.com](http://www.geniecompany.com)) or by phone at: 1-800-354-3643 for programming assistance.

FCC Part 15.21 Statement:  
Changes or modifications not expressly approved by the party responsible for compliance could void the user's authority to operate the equipment.  
FCC / IC Statement:  
This device complies with FCC Part 15 and Industry Canada licence-exempt RSS standard(s). Operation is subject to the following two conditions:  
(1) this device may not cause harmful interference, and (2) this device must accept any interference received, including interference that may cause undesired operation of the device.  
Le présent appareil est conforme aux CNR d'Industrie Canada applicables aux appareils radio exempts de licence. L'exploitation est autorisée aux deux conditions suivantes: (1) l'appareil ne doit pas produire de brouillage, et (2) l'utilisateur de l'appareil doit accepter tout brouillage radioélectrique subi, même si le brouillage est susceptible d'en compromettre le fonctionnement.